



SUPERIOR SERVICE SINCE 1962

Best-in-industry supply chain solution for OEM's, MRO's, airlines and the military.

PRECISION MACHINING - GRINDING - COMPLEX ASSEMBLY - PRODUCT DESIGN - INTEGRATION



MAJOR PLATFORMS PA SUPPORTS

737, 767 & 787 BOEING	F-15, F-16, F18 & F22 Jets
A300 & A320 AIRBUS	F-35 Lighting & F35B
A330NEO AIRBUS	C-130 Hercules
RJ100/200 Bombardier	KC-46 Refueling Tanker
Falcon 2000/900 Jet	Global Hawk Drone
Cessna Denali	B-52 Bomber
680 Latitude Cessna	UH-60 Blackhawk
S76/S92 Sikorsky	AH-64 Apache
NH-90 AIRBUS	CH-47 Chinook
EH-101 Agustawestland	Nuclear Submarines



CUSTOMER APPROVALS

BOEING & AIRBUS	Crane Aerospace
Lockheed Martin	Hydro-Aire
GE Aviation	B.I. Technologies
Raytheon	Haskel International
Northrop Grumman	BEI Technologies
Honeywell	Esterline Mason
Parker Hannifin	Servotronics
Eaton Aerospace	Aero Controlex
Woodward HRT	PTI Technologies

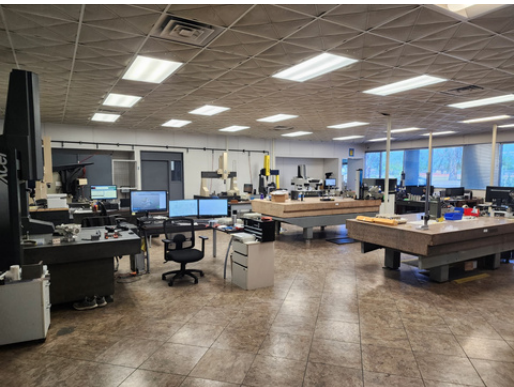
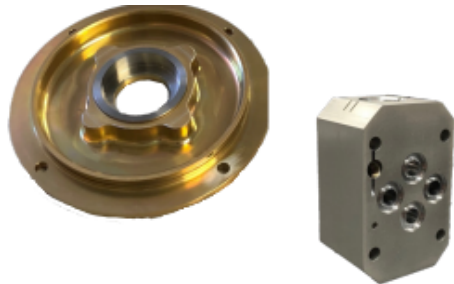
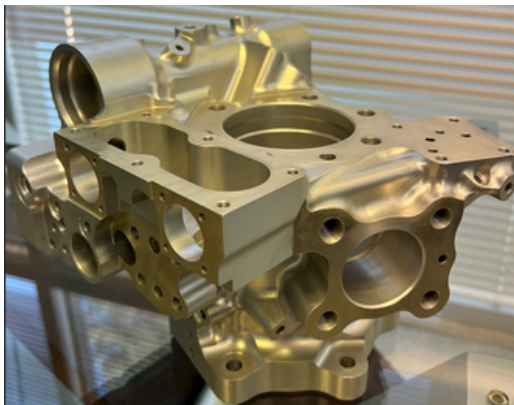


QUALITY APPROVALS & EXPERTISE

SO 9001:2015 Certified
AS9100D Certified
ITAR & NIST Compliant
PPAP Proficient
CMMC Cyber Security Protocol
FAR & DFARS Compliant
NADCAP Certified Suppliers
Implementing Six Sigma quality practices.



PRECISION MACHINING OF COMPLEX PARTS



ABOUT US

Industry leader in valve housing, enclosures & complex large/small part production.

New state of the art 50,000 sqft facility based in Phoenix Arizona.

Over 20,000 sqft available for growth.

Entire facility is temperature controlled.

Automated Makino cells.



PRODUCTS & PART SERIES

ADAPTER
BARREL
BASE PLATE
BLOCK MOUNTING ASSY
BRACKET
CAP, DIFF RELIEF VALVE
ENCLOSURES
END BELL ASSY FRONT
END BELL HOUSING ASSY
FINGER LOCK
FLANGE
FRONT HOUSING
GLAND
GUIDE
HANDLE
HEAT SINK
HEATSHEILD
INTERFACE PLATE ASSY
KNOB
LEVER
LINK
LOWER BRACKET

MANIFOLD & MANIFOLD ASSEMBLY
MOUNTING BRACKET
MOUNTING FLANGE
PISTON
PORT CAP MACHINING
PUMP HOUSING
QUILL
RETAINER
SADDLE
SEAL
SEAT
SLEEVE
SPACER
SPACER-OUTER
SLEEVE
SUPPORT BRACKET
SUPPORT, MOTOR
ASSEMBLY
THREAD PIECE
TOURQUE MOTOR COVER
TRANSFER TUBE
VALVE BODY

METAL & ALLOY CAPABILITIES

Castings & Forgings,
Aluminum Alloys, Stainless
Steel, Aluminum, Bronze,
Titanium, Inconel, Carbon,
Tool Steels, Copper,
Brass & Plastics

OUTSIDE PROCESSING CAPABILITIES

Anodizing, Chrome Plating,
Electropolish, Heat Treating,
Impregnation Coatings,
Non-Destructive Testing & Passivate,
Dry Film Lubrication, HVOF & Paint